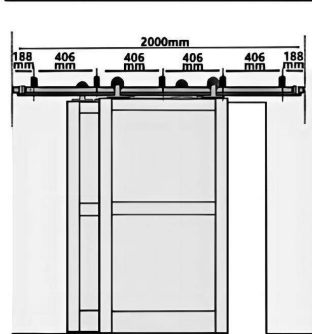
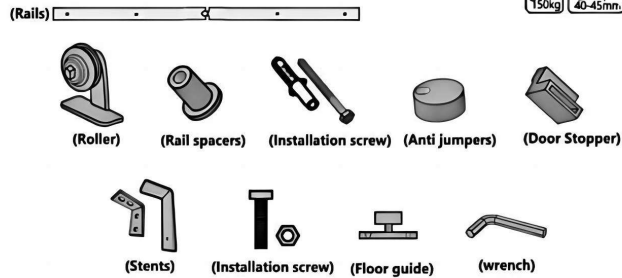


BARN DOOR DOUBLE TRACK OVERLAP HARDWARE INSTALLATION INSTRUCTIONS

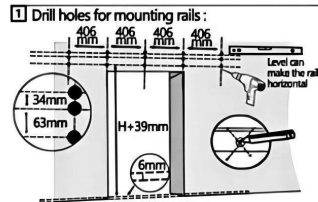
REFERENCE 2 METERS INSTALLED DEMO



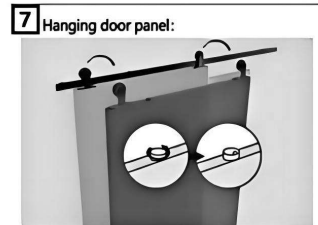
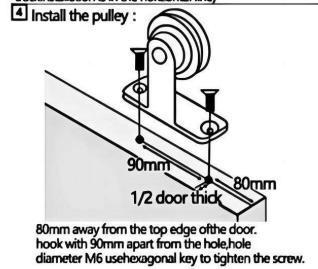
HARDWARE LIST



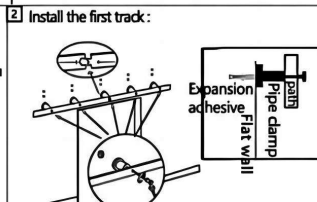
INSTALLATION METHOD



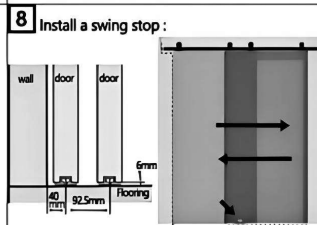
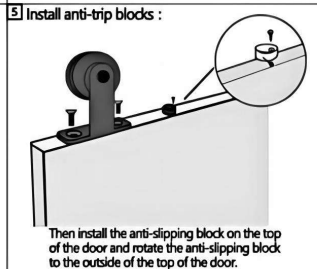
According to the width of the doorhole + 120 mm and the height of the door + 45 mm and according to the corresponding position of the guiderail, drilling hole diameter M3, depth 45mm (please ensure that the track installation is in the horizontal line)



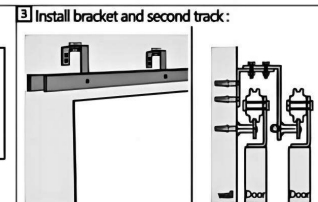
Hang the door with hook and anti-dislodging on the track, and adjust the anti-dislodging under the track to prevent the hook from jumping out of the track.



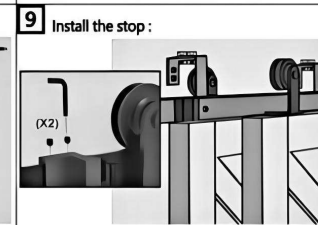
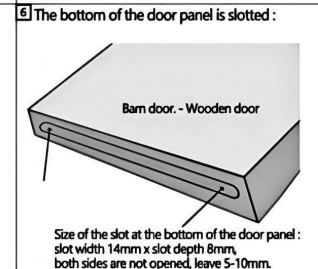
Install the track on the wall in the order of fittings shown in the figure.



The installation of the swing stop in the center of the sliding track of the wooden door (the slot at the bottom of the door should be cut in advance) is shown in the figure.



First install the bracket fixed on the wall and install the track in the sequence shown in the figure. The adjustable range of the bracket is 79mm-88mm, and the recommended installation size is 88mm.



Adjust the stroke of the door and install the limiter. After the adjustment is completed, tighten the screw with a 7-word hexagonal key. Installation complete.