

Wood & Iron Stair Components



WOOD &
IRON STAIR
SYSTEMS

who is.....

HERITAGE MILLWORK INC

Established in the Spring of 1997 in Ramsey, Minnesota, Heritage Millwork Inc has been servicing the Upper Midwest Market as a two-step distributor of mouldings, millwork, and doors, supplying more than 250 dealers in Minnesota, Wisconsin, South Dakota and Iowa.

Originally stocking only a few interior door designs in two wood species to now over twenty-five door designs in nine species, along with unlimited special-order options. Our large warehouse accommodates



bigger volumes eliminating the need to wait for your products. In addition to a wide selection of interior doors, HMI also stocks over thirty moulding profiles in seven species including MDF, with special-order moulding profiles and a full offering of stair parts. Exterior entry door inventories also continue to evolve and expand, including products that promote striking curb appeal and home security as well as product performance including rot resistant materials.

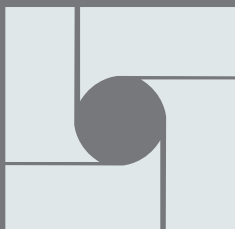
In 2017 Heritage Millwork Inc opened Traditions Finishing Inc (TFI), a new pre-finishing facility, filling a growing desire amongst dealers to have products arrive at the job site finished and ready for installation. Together, HMI and TFI offer finishing solutions on all product lines in a wide range of colors and finishes, including custom color solutions upon request.

Over the last 25 years HMI has evolved and adapted as market conditions, industry, and customer's needs have changed. The one thing that has remained constant is our commitment to customers, employees, and

suppliers. Founded on strong Family values, and still driven by those same principles, our dedicated Team of professionals is committed to exceeding expectations by delivering quality products and service.



- Hand and Shoe Rail.....1
- Wood Balusters.....2
- Post to Post Newels3
- Box Newels4
- Box Newels.....5
- Hollow Iron Balusters & Shoes.....6
- Hollow Iron Balusters & Shoes7
- Solid Iron Balusters & Shoes8
- Mega Iron Balusters & Shoes.....9
- Skirtboards, Treads & Risers 10
- Accessories 11
- Special Order..... 12
- Stair Part Basics..... 13



Heritage Millwork Inc
6190 McKinley Street NW
Ramsey, MN 55303
763-323-7501 (p)
888-323-7501 (p)
www.heritagemillworkinc.com

HAND AND SHOE RAIL

1-1/4" & 1-3/4"



Balusters Primed 5060
Shoerail Poplar 6045



Newels Poplar 4091
Balusters Poplar 5360



6010
2-1/4" x 2-3/8"
AL, MP, POP, RO



6010-P
2-1/4" x 2-3/8"
1-1/4" Plow
AL, MP, POP, RO



6005
2-1/2" x 2-5/16"
1-3/4" Plow
RO



6100-P
2-1/4" x 1-5/8"
1-1/4" Plow
AL, MP, POP, RO



6100S
2-1/4" x 1-5/8"
AL, MP, POP, RO



6210
2-5/8" x 2-3/8"
AL, MP, POP, RO



6210-P
2-5/8" x 2-3/8"
1-3/4" Plow
AL, MP, POP, RO



6013
2-1/4" x 1-5/8"
1/2" Plow
AL, POP, RO



6012
2-1/4" x 1-5/8"
AL, POP, RO



6040
1-3/4" x 1-5/8"
PN, POP, RO



6000F
1-1/4"
AL, MP, POP, RO



6007
1-3/4"
AL, MP, POP, RO



6025
1/2"
AL, POP, RO



6045
2-1/2" x 3/4"
1-1/4" Plow
MP, POP, RO



6000
2-1/2" x 3/4"
1-1/4" Plow
AL, MP, POP, RO



6006
3-1/8" x 1"
1-3/4" Plow
AL, MP, POP, RO



6002
2-1/4" x 3/4"
1/2" Plow
AL, POP, RO

WOOD BALUSTERS

1-1/4" & 1-3/4"



Newels Alder 4095
Balusters Alder 5360



5015

1-1/4"

36", 39", 41"

POP, PR, RO



5070

1-1/4"

34", 39", 41"

MP, POP, PR, RO



5060

1-1/4"

36", 42"

AL, MP, POP, PR, RO



5005

1-3/4"

36", 41"

POP, RO



5360

1-3/4"

36", 42"

AL, MP, POP, PR, RO

NEWELS

3" & 3-1/2"



Newels Poplar 4076-48
Balusters Primed 5060



4040

3" X 47-1/2"
MP, POP, RO



4045

3" X 58"
MP, POP, RO



4074

3" X 56"
MP, POP, RO



4076-48

3-1/2" X 48"
MP, POP, RO



4076

3-1/2" X 56"
AL, MP, POP, RO



4007

3-1/2" X 47-1/2"
MP, POP, RO



4008

3-1/2" X 56"
MP, POP, RO



4005

3-1/2" X 56"
POP

BOX NEWELS



Newel Poplar 4091
Balusters 5360



Newel Poplar 4091
Balusters Poplar 5360



4095
7-1/2" x 56"
POP



4091-FP
6-1/4" x 55"
AL, POP, RO



4091
6-1/4" x 55"
AL, MP, POP, RO

BOX NEWELS



5656
5" x 56"
AL, POP



4075-55
3-1/2" x 55"
AL, MP, POP, RO



Includes Flat
or Pyramid
Cap



4291-ADJ
3-1/2" x 55-1/2"
With 22" Adjustable Newel Sleeve
AL, MP, POP, RO



IRON BALUSTERS

hollow 1/2"

STOCK FINISHES



Antique Bronze
(ABZ)



Matte Black
(MB)
(flat black)



Ash Gray
(AG)



Oil Rubbed Bronze
(ORB)



Oil Rubbed Copper
(ORC)

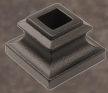


Satin Black
(SB)

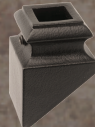


Silver Vein
(SV)
(powder coat)

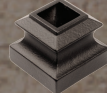
SHOES & KNUCKLES



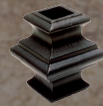
ALFSH01
Flat Shoe
(no set screw)



ALPSH02
Pitch Shoe
(w/ set screw)



ALM06
Flat Shoe
(w/ set screw)



ALAK01
Universal Knuckle
(for 1/2" balusters)



ALSQPL1
Flat Shoe
(for 1/2" balusters)



ALSQPL2
Rake Shoe
(for 1/2" balusters)

(shoes shown above, are for 1/2" balusters)



HPLA44
1/2" x 44"



H1TW44
1/2" x 44"



H2TW44
1/2" x 44"



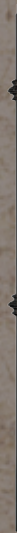
H1BASK44
1/2" x 44"



H2BASK44
1/2" x 44"



H1KNUC44
1/2" x 44"



H2KNUC44
1/2" x 44"

ABZ, AG, MB, ORB, ORC, SB, SV

MB, ORB, ORC, SB

ABZ - Antique Bronze

AG - Ash Gray

MB - Matte Black (flat black)

ORC - Oil Rubbed Copper

ORB - Oil Rubbed Bronze

SB - Satin Black

SV - Silver Vein (powder coat)



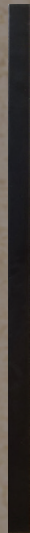
Balusters Matte Black (flat black)
H1KNUC44 and H2KNUC44



H436
1/2" x 2-3/16" x 44"
SB



H435
1/2" x 3-5/8" x 44"
SB



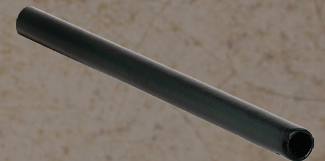
HOL166444
1/2" x 1-1/2" x 44"
ORC, SB



ALRCPL1
Flat Shoe
(for 1-1/2" balusters)



ALRCPL2
Rake Shoe
(for 1-1/2" balusters)



Hollow Tube Horizontal Baluster
5/8" x 96"
SB

IRON BALUSTERS

solid 9/16"

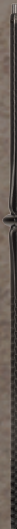


Balusters Matte Black (flat black)
M14044, M15044 & M14344
Newel Poplar 4095



M14344
Hammered Face

9/16" x 44"
MB, ORB, SB



M14044
Hammered Face
Single Spoon w/ Knuckles

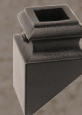
9/16" x 44"
MB, ORB, SB



M15044
Hammered Face
Double Spoon w/ Knuckles

9/16" x 44"
MB, ORB, SB

Shoes For 9/16" Balusters



H05P
Pitch Shoe
(w/ set screw)



H06
Flat Shoe
(w/ set screw)



H03
Flat Shoe
(no set screw)

IRON BALUSTERS

— hollow mega 3/4"



Balusters
Matte Black (flat black) MG1TW44
Poplar 5360



MGPLA44
3/4" x 44"
MB, ORC



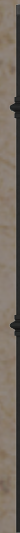
MG1TW44
3/4" x 44"
MB



MG2TW44
3/4" x 44"
MB



MG1KNUC44
3/4" x 44"
MB, ORC

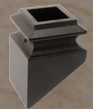


MG2KNUC44
3/4" x 44"
MB, ORC

Shoes For 3/4"
Balusters



MGM08
Flat Shoe
(w/ set
screw)



MGPSH08
Pitch Shoe
(w/ set
screw)

MISC. STAIR PARTS

skirtboard, rosettes, treads, risers



H911
RANCH/MISSION
REVERSIBLE SKIRTBOARD
7/16" x 9-1/4"
MP, POP, PR MDF, RO, SA

H916
PRINCETON/ MISSION
REVERSIBLE SKIRTBOARD
7/16" x 9-1/4"
CH, MP, POP, RO, SA

7317
ROSETTE
4-9/16" ROUND
MP, POP, RO

7318
ROSETTE
4-5/16" x 6"
AL, MP, POP, RO

7027
ROSETTE
4-7/16" x 6-1/2"
AL, MP, POP, RO



8070 - Solid Tread No Return
11-1/2"
MP, RO

8070R - Solid Tread w/ Return
11-1/2" (reversible) 48" overall length
MP, RO

8075 - Solid Riser
8" x 48"
MP, RO

H4899 - Woodcore Riser Veneered Face
7-1/2" x 47-3/4"
MP, RO



S-8071LH
False Tread
13-7/8" x 5-1/4"
POP, RO

S-8071RH
False Tread
13-7/8" x 5-1/4"
POP, RO

8172
Closed False Tread Kit
Tread 12-1/4" x 6"
Riser 8" x 6"
MP, POP, RO

8079
False Tread Kit
Tread 11" x 6" RH/LH
MP, POP, RO

8076
False Riser
6" x 8"
POP, RO



W6312
Landing Tread
3-1/2" x 1-1/16"
RO

W6313
Landing Tread
5-1/2" x 1-1/16"
AL, MP, POP, RO

H6315
Stair Nosing
1-1/4" x 1-1/16"
MP, RO

982
Cove
5/8" x 13/16"
MP, POP, RO

ACCESSORIES

tools, handrail brackets, epoxy

3127- Handrail Brackets 2-3/4" Wall To Center Span



Oil Rubbed Bronze Polished Brass Satin Nickel Matte Black

W6850 - Handrail Brackets 3-3/8" Wall To Center Span



Oil Rubbed Bronze Polished Brass Satin Nickel Dull Chrome



2901
8.5 oz Epoxy
Cures in 20-30 Min.
Installs Approx
50-70 balusters



2902
F101
Injector Tool for 2901



2903
Extra Nozzle
for 2901



2905
Epcon A7
5oz Epoxy Kit
Cures in 5-7 Min
Installs approx. 40-48
balusters. 6 minute working
time



2906
A-24 Nozzle
Extra Nozzle for A-501-K



Tack time approx. 4
minutes. Cure time
of 24-72 hours.

Use with a
STANDARD caulk
gun cartridge.

Fills approx. 110
holes depending
on hole size.

E6100
Non-Sag Adhesive



Keylock
Newel Fastener
1-7/8" x 2-5/8"



Newel Plate
Newel Fastener
4-5/8 x 4-5/8



Sure Tite
Newel Fastener
11"



3901
Versa Tool



Dowel-Fast
Dowel Fast Screws
50 Pack

SPECIAL ORDER

extended lead time



M438
Liberty Series
1/2" x 44"
AG, SB



M439
Liberty Series
1/2" x 44"
AG, SB



M401
Medallion Series
1/2" x 44"
AG, MB, SB



M402
Medallion Series
1/2" x 44"
AG, MB, SB



M411
Medallion Series
1/2" x 44"
AG, MB, SB



M13344
Mediterranean Series
9/16" x 44"
SB, ORB



M13444
Mediterranean Series
9/16" x 44"
SB, ORB



M13144
Mediterranean Series
9/16" x 44"
SB, ORB



M132
Mediterranean Series
9/16" x 44"
SB, ORB

ABZ - Antique Bronze

AG - Ash Gray

MB - Matte Black (flat black)

ORC - Oil Rubbed Copper

ORB - Oil Rubbed Bronze

SB - Satin Black

SV - Silver Vein (powder coat)

STAIR PART BASICS



Over the Post
with open tread



Post To Post
with kneewall



Post To Post
with open tread

In an **OVER THE POST** staircase design, the handrails run over the newel posts and the balusters are fitted into the handrailing. These types of staircases, require the use of fittings and volutes. A **POST TO POST** staircase design, is a system where the handrail is mounted between the newel posts. These are the most common of staircase designs, these systems can use box newel or standard smaller newels.



Iron Balusters
With ALAK01 Universal
Knuckle



Iron Balusters
Installed to
handrail



Iron Balusters
Installed to hardwood
floors with flat shoes



Iron Balusters
Installed with pitch
shoes

“Habit is habit and not
to be flung out of the
window by anyone, but
coaxed downstairs a
step at a time.”

Mark Twain



www.heritagemillworkinc.com

5000 - hmistair922